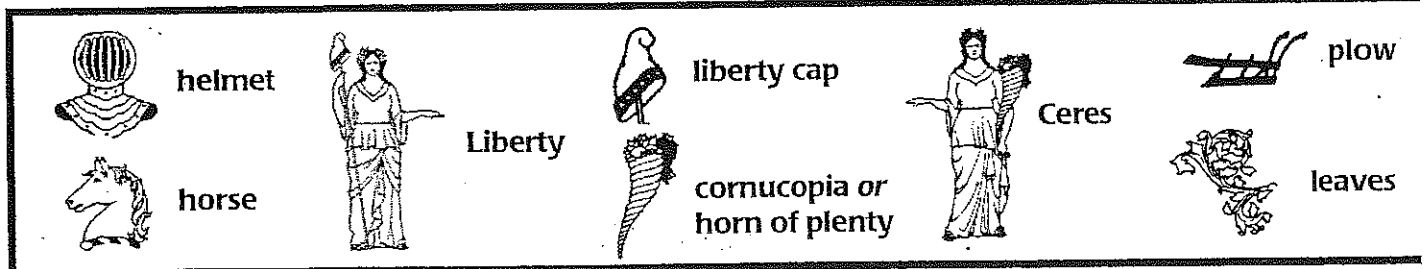


Our State Seal



New Jersey's State Seal was designed by Francis Hopkinson for our new state in the year 1777. Each of the Seal's symbols stands for something important about New Jersey.

The helmet with its crest of a horse's head indicates that New Jersey is a sovereign State – meaning that we make laws for ourselves.

The woman on the left is Liberty. Liberty means freedom. She holds a staff topped by a liberty cap, an important symbol of freedom. The woman on the right is the Roman goddess Ceres, who represents agriculture and prosperity. She grasps a cornucopia or "horn of plenty."

The three horse-drawn plows on the shield, the horse's head on the helmet and the swirls of leaves also symbolize New Jersey's farming tradition. The scroll at the bottom bears the motto "L _____ and P _____" and the date _____, the year New Jersey became a state.

State Symbols

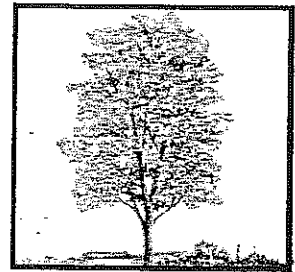
Our state has several official symbols that represent many of the things that are special about New Jersey. The Legislature chose the first official symbol, the state flower (the violet), in 1913. Since then, eight more symbols have been added.

Draw lines to connect the picture of each symbol to its name. The year after each name tells you when the New Jersey Legislature adopted the symbol.
(answers on page 21)

A



B



1. Violet,
State Flower, 1913

2. Eastern Goldfinch,
State Bird, 1935

3. Red Oak,
State Tree, 1950

4. Honey Bee,
State Insect, 1974

5. Horse,
State Animal, 1977

6. Square Dance,
State Folk Dance, 1983

7. Hadrosaurus Foulkii,
State Dinosaur, 1991

8. Brook Trout,
State Fish, 1991

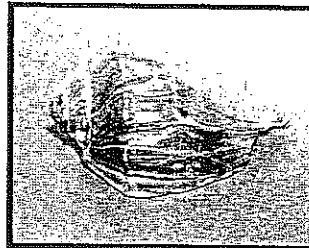
9. Knobbed Whelk,
State Shell, 1995

10. Blueberry,
State Fruit, 2004

C



E



G



D



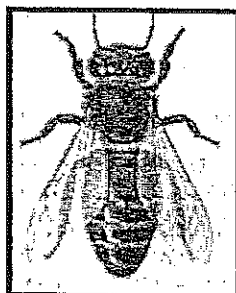
F



H



I



J

